

**READY TO MEET  
OSHA STANDARDS**  
All Units Have Range Control & Auto Shutdown



**SIGALARM®**



# High Voltage Power Line Products:

- PROXIMITY ALARMS
- RANGE CONTROL WARNING DEVICES
- DEVICES THAT LIMIT RANGE
- INSULATED LINKS



**we  
are  
in the  
of business  
of saving lives.**

[www.sigalarminc.com](http://www.sigalarminc.com)

# High Voltage Power Line Proximity Warning System



*This solid state electronic safety system provides both audible and visual warning signals to alert the operator and attendant ground personnel when the boom comes within proximity of an energized high-voltage power line.*

## FEATURES:

System goes to maximum sensitivity when first activated.

The system can be activated automatically at engine start-up, or by use of the power switch on the control panel. Entire length of the boom — from tip to base — is protected. Any part of the boom that enters the warning zone will set off the alarm.

Complete system test function tests and confirms the alarm sensing circuitry, antenna, alarm horn, and alarm light. The operator can test the entire system at anytime.

No false alarms due to external interference.

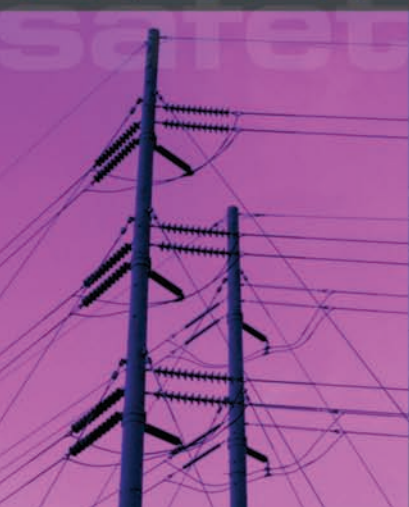
Provides warning of lightning so that operations can be discontinued until the electrical storm has passed. Simple adjustment of warning

zone. The operator doesn't need to know voltage in the power line. The system can be used to confirm power line shut off.

Easy Installation.



Why Risk It!



# High Voltage Power Line



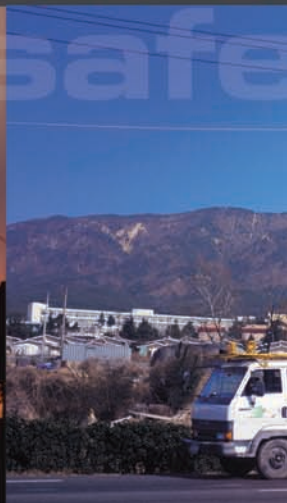
# Wireless Proximity Detector



## FEATURES:

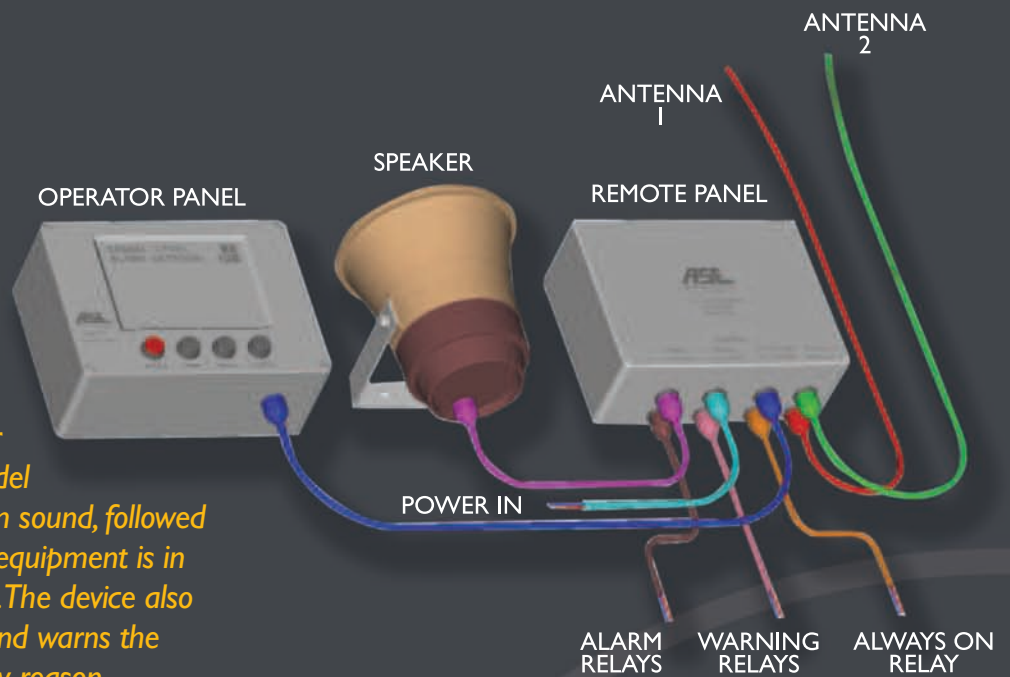
- Wireless E-field detection in 50 Hz and 60 Hz over a wide range of sensitivity.
- Between one and four wireless sensors integrated into the network.
- Optional capabilities to log events to PC/laptop via data port or via wireless link.
- Logs date, time, and warnings given to operator.
- LCD screen on base unit.
- Relay output for each alarm.
- Audio warning tones.
- Optional speech synthesizer module.
- Adjustable limits for warnings. Default level on switch-on is maximum sensitivity.
- 12/24 Volt operation for base unit.
- Continuously 'on' system for remote users.
- Environmentally resistant to moisture, shock and heat.
- Self-checking for network and communications status.
- Flash upgradeable firmware in base unit.
- Small size single module.

*The high voltage proximity detector is designed to alert mast and boom vehicle operators to the danger of contact with a live power line, the result of which could easily cause injury, death or damage to equipment.*



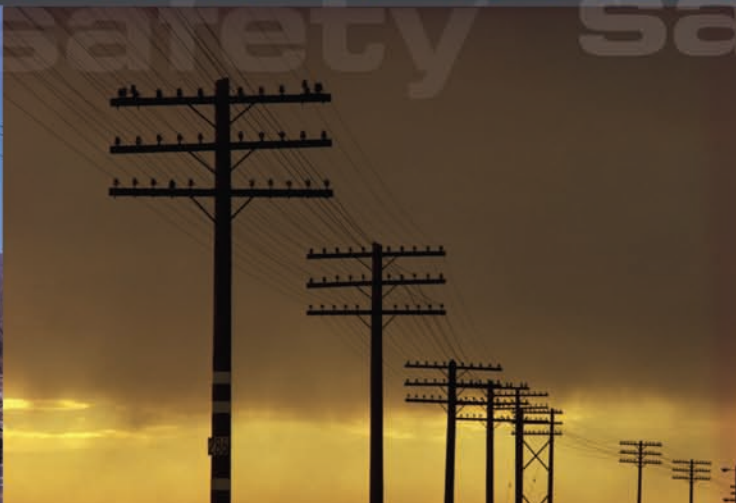
# High Voltage Power Line Proximity Detector

When installed on a mobile crane or other heavy equipment, the ASE Model 2200L provides a warning and alarm sound, followed by an announcement whenever the equipment is in close proximity to a high voltage line. The device also includes automatic self diagnostics and warns the operator if the unit should fail for any reason.



## FEATURES:

- Graphic display screen
- Amplified loudspeaker
- Up to two antennas
- Blinking alarm display
- Automotive style fuses
- Watertight construction
- Blinking warning display
- Numeric electric field indication
- Swivel mount on operator panel
- Numeric electric field
- Swivel mount on operator panel
- Numeric alarm setpoint indication
- Voice message if any faults occur
- 12VDC or 24VDC voltage supply
- Automatic antenna continuity checking
- Alarm relays - one relay energizes - other relay de-energizes
- Always on relay - remains energized when panel is energizes
- Warning relays - one relay energizes - other relay de-energizes
- Raise and lower pushbuttons to raise and lower alarm setpoint
- Configuration - Allows selection of warning setpoint
- Configuration - Selects alarm only at alarm and warning
- Configuration - Allows partial muting of alarm sound and message
- Configuration - Allows power pushbutton to partially mute speaker
- Configuration - Allows partial muting of warning sound and message
- Configuration - Warning and Alarms in English, Spanish or both.



# Product Applications

*The SIGALARM system is at home in many working situations. Below you will find the most common applications for SIGALARM. If you have questions about using SIGALARM in a different application, just send us an email.*

**Construction:**

Heavy equipment such as cranes, power shovels, concrete pumps, and dump trucks.

**Utility Companies:**

Aerial towers and platforms.

**Fire Departments:**

Snorkel units, aerial towers and platforms, aerial ladders.

**Railroads:**

Locomotive cranes and railroad wreckers.

**Signs (Billboards):**

Telescoping arms and booms.

**Television Broadcast vehicles** - with telescoping mast.

**Other:**

Farm equipment, portable drilling rigs, house movers, and truck-mounted "A" frames.

***Just about anything that can reach power lines.***



**Your local distributor:**



We are in the business of saving lives.

Dear Customer:

Thank you for your commitment to safety and interest in our products. Sigalarm is on the eve of its 50th anniversary and could not have achieved this accomplishment without maintaining a high degree of customer satisfaction. We look forward to working together with you in reducing unnecessary power line contacts.

There is no excuse; power line contact is a known problem. The loss of life and property is enormous. OSHA has addressed this by recently publishing the new crane and derricks standards 29 CFR Part 1926 in the federal register and can be seen at [www.osha.gov/doc/cranesreg.pdf](http://www.osha.gov/doc/cranesreg.pdf)

Included in the new regulations is the requirement to choose 1 of 5 options listed when equipment can be brought within 20 foot a power line. A dedicated spotter whose sole responsibility is to be devoted to this task is 1 of these 5 options. We fully support OSHA and believe a dedicated spotter should be used when appropriate however, few people realize that in certain situations humans have been proven to have difficulty correctly judging the distance between power lines and booms or mast related to depth perception issues. Please know and understand the benefits and limitations of these 5 options before operation near power lines. We believe that the Sigalarm range of systems will meet 3 of the 5 options provided by OSHA due to their ability to auto shutdown the boom or mast when set by the operator. Our range control warning and range limiting ability provides the added protection required in most normal crane operations which is to electronically back up a trained operator who might not realize how close he or she has gotten to a power line. Thousands of Sigalarm proximity alarm units have been sold worldwide in numerous Industries. We have documented units in the field up to 20 years. Compare the Sigalarm life expectancy to the cost of a dedicated spotter and it is clearly the most economical choice.

**With your commitment to safety; we can help save lives, property, and meet OSHA requirements.** I invite you to join our satisfied customers around the world, who have enjoyed the peace of mind, knowing that they have a Sigalarm Power line warning system installed and operating.

NTRL tested Insulated links are now **required** if working within Table A Red Zone. We are an authorized Hirtzer distributor.

We are willing to compromise on everything but **Quality, Integrity,** and of course **Safety.**  
ALL SIGALARM PRODUCTS ARE MADE 100% IN THE USA.

Cordially,

Lance Burney  
CEO



5224 West State Road 46, PMB 405  
Sanford, Florida 32771  
1.800.589.3769  
[www.sigalarminc.com](http://www.sigalarminc.com)